

**FINEST QUALITY**

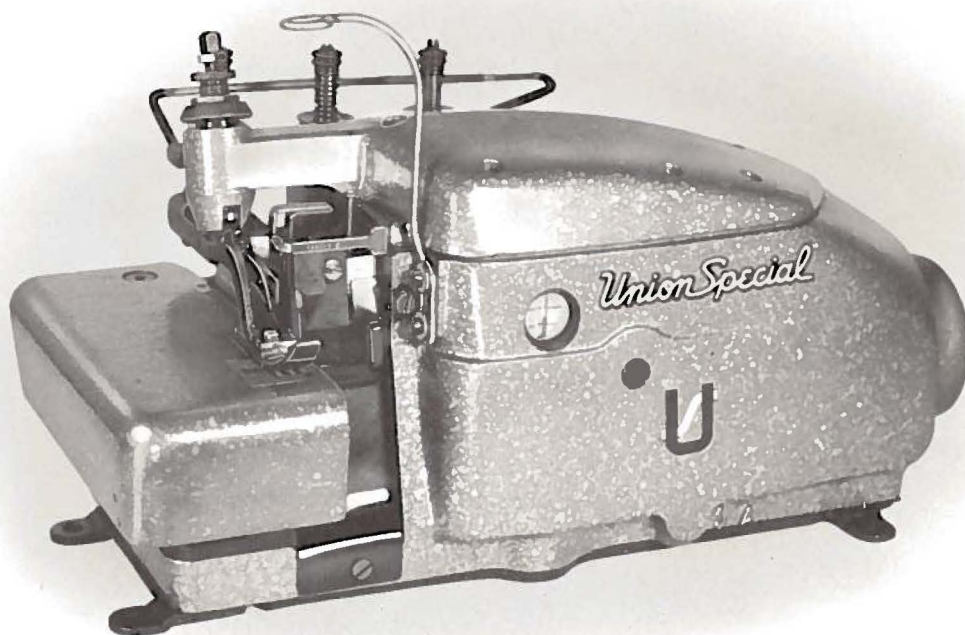
*Union Special*<sup>®</sup>  
LEWIS • COLUMBIA

**INDUSTRIAL  
SEWING  
MACHINES**

**UNITY SEWING SUPPLY CO.  
824 E. 8th St.**

**Los Angeles, CA 90021**

**STYLE  
39500BF**



**CLASS 39500**

**CATALOG  
No.  
103BF**

**STREAMLINED  
HIGH SPEED OVERSEAMERS**

*Union Special* **MACHINE COMPANY**

**CHICAGO**

From the library of: Superior Sewing Machine & Supply LLC

CATALOG NO. 103 BF  
(Supplement to Catalog No. 103 S)

INSTRUCTIONS  
FOR  
ADJUSTING AND OPERATING

LIST OF PARTS

CLASS 39500

STYLE  
39500 BF

The parts listed in this catalog are  
furnished at list prices for repairs only.

First Edition

Copyright 1966  
by  
Union Special Machine Co.  
Rights Reserved in All Countries

*Union Special*  
**MACHINE COMPANY**  
INDUSTRIAL SEWING MACHINES  
**CHICAGO**

Printed in U. S. A.

January, 1966

## IDENTIFICATION OF MACHINE

Each Union Special machine is identified by a Style number which is stamped into the name plate on the machine. Style numbers are classified as standard and special. Standard Style numbers have one or more letters suffixed, but never contain the letter "Z". Example: "Style 39500 BF". Special Style numbers contain the letter "Z". When only minor changes are made in a standard machine, a "Z" is suffixed to the standard Style number. Example: "Style 39500 BFZ".

Styles of machines similar in construction are grouped under a Class number which differs from the style number, in that it contains no letters. Example: "Class 39500".

## APPLICATION OF CATALOG

This catalog is a supplement to Catalog No. 103 S and should be used in conjunction therewith. Only those parts which are used on Style 39500 BF, and not on Style 39500 P, are illustrated and listed at the back of the book.

This catalog applies specifically to the Standard Style of machine as listed herein. It can also be applied with discretion to some Special Styles of machines in this class. Reference to direction, such as right, left, front, back, etc., are given from the operator's position while seated at the machine. Operating direction of handwheel is away from the operator.

## STYLE OF MACHINE

Single Curved Blade Needle, Two Looper, Three Thread, High Throw, Overseaming Machine. Differential Feed, Trimming Mechanism with Spring Pressed Lower Knife. Automatic Lubricating System.

39500 BF For seaming bulky knit sweaters. Machine can also be used for attaching a reinforcing tape used on shoulder seams of sweaters and similar garments. Tape is automatically guided by the slot in the presser foot. Machine is equipped with straight upper knife parts and a side cover that enables the machine to set circular sleeves. Seam specification 504-SSa-1, standard seam width 3/16 inch; stitch range 8 to 20 per inch; cam adjusted feed.

## OILING

CAUTION! Oil was drained from machine when shipped, so reservoir must be filled before beginning to operate. Oil capacity of Class 39500 is six ounces. A straight mineral oil of a Saybolt viscosity of 200 to 250 seconds at 100° Fahrenheit should be used.

Machine is filled with oil at spring cap in top cover. Oil level is checked at the sight gauge on the front of the machine. Red bulb on the oil level indicator should show between gauge lines.

Machine is automatically lubricated. No oiling is necessary, other than keeping the main reservoir filled. Check oil daily, before the morning start. Add oil as required.

Drain plug screw is located at the back of the machine near bottom edge of base. It is a magnetic screw designed to accumulate possible foreign materials which may have entered the crankcase. It should be removed and cleaned periodically.

## IDENTIFYING PARTS

Where the construction permits, each part is stamped with its part number. On some of the smaller parts, and on those where construction does not permit, an identification letter is stamped in to distinguish the part from similar ones.

Part numbers represent the same part, regardless of the catalog in which they appear.

IMPORTANT! ON ALL ORDERS, PLEASE INCLUDE PART NAME AND THE STYLE OF MACHINE FOR WHICH PART IS ORDERED.

## TERMS

Prices are net cash and subject to change without notice. All shipments are forwarded f.o.b. shipping point. Parcel Post shipments are insured unless otherwise directed. A charge is made to cover postage and insurance.

## NEEDLES

Each Union Special needle has both a type number and a size number. The type number denotes the kind of shank, point, length, groove, finish and other details. The size number, stamped on the needle shank, denotes the largest diameter of blade, measured in thousandths of an inch, midway between the shank and the eye. Collectively, the type number and the size number is the complete symbol, which is given on the label of all needles packaged and sold by Union Special.

Style 39500 BF uses a curved blade needle. The standard needle for this Style is Type 154 GAS. It has a round shank, round point, curved blade, is standard length, single groove, struck groove, spotted, chromium plated and is available in sizes 022, 025, 027, 029, 032, 036, 040, 044, 049, 054.

To have needle orders promptly and accurately filled, an empty package, a sample needle, or the type and size number should be forwarded. Use description on label. A complete order would read: "1000 Needles, Type 154 GAS, Size 040".

Selection of the proper needle size should be determined by size of thread used. The thread should pass freely through the needle eye in order to produce a good stitch formation.

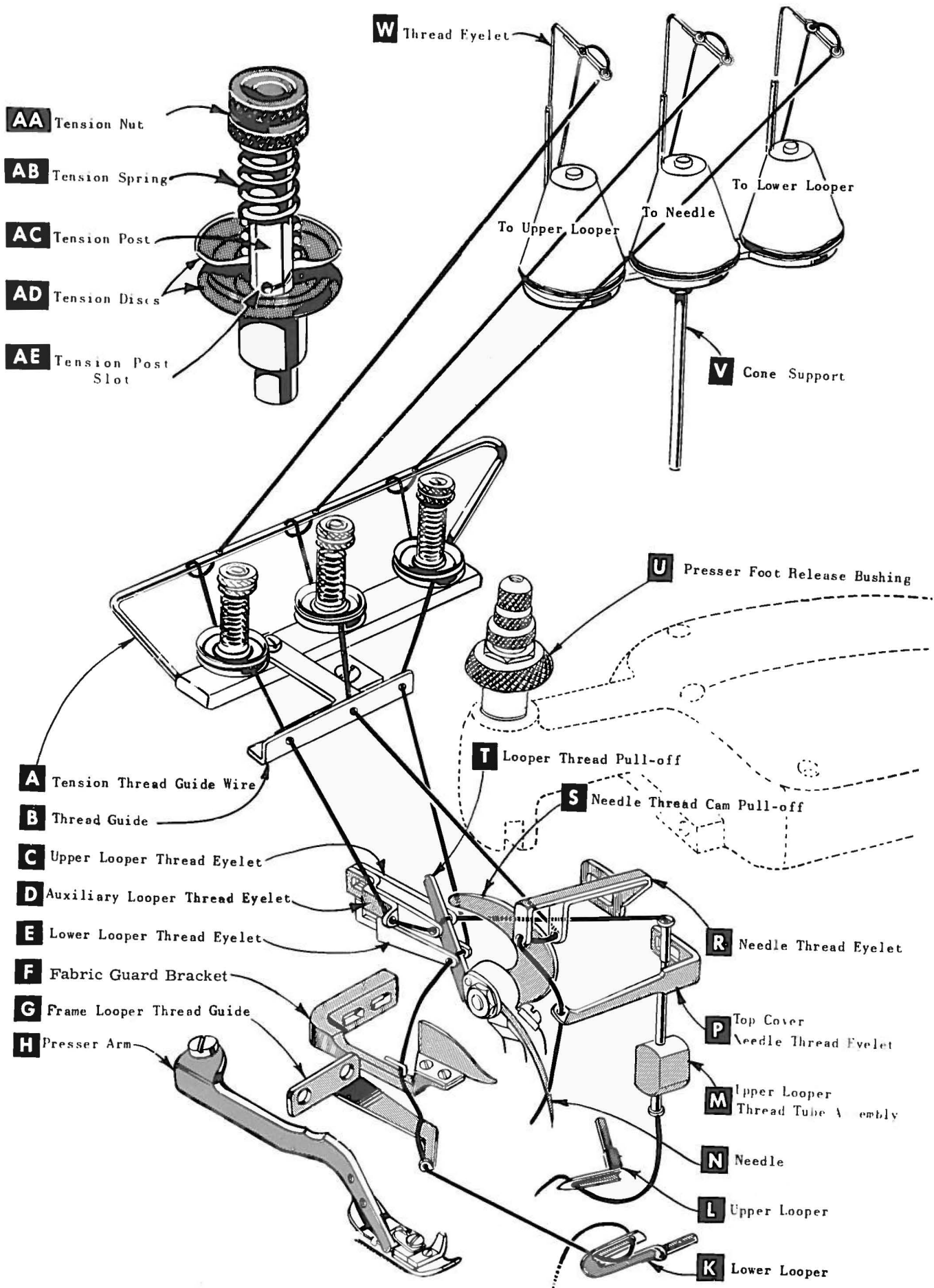
## USE GENUINE NEEDLES AND REPAIR PARTS

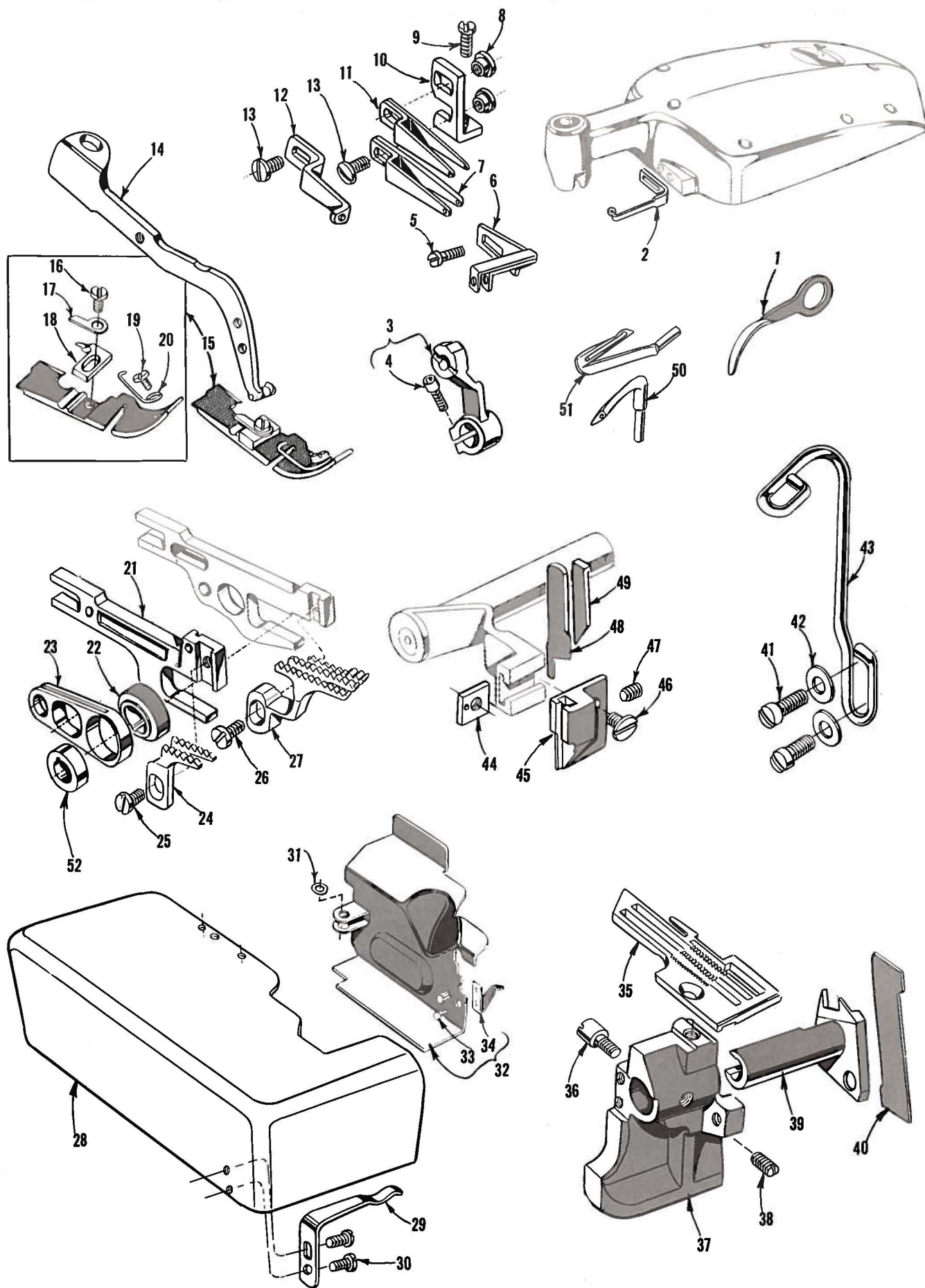
Success in the operation of these machines can be secured only with genuine Union Special Needles and Repair Parts as furnished by the Union Special Machine Company, its subsidiaries and authorized distributors. They are designed according to the most approved scientific principles, and are made with utmost precision. Maximum efficiency and durability are assured.

Genuine needles are packaged with labels marked *Union Special*. Genuine repair parts are stamped with the Union Special trademark. Each trademark is your guarantee of the highest quality in materials and workmanship.

## ASSEMBLING AND ADJUSTING SEWING PARTS

All the instructions pertaining to the adjustment of Style 39500 BF are the same as those for Style 39500 P, as described in Catalog No. 103 S.





The parts illustrated on the preceding page and described below, represent the parts that are used on Style 39500 BF, but are not used on Style 39500 P.

Those parts shown in phantom views and bearing no reference numbers are common to Styles 39500 BF and 39500 P.

Use Catalog No. 103 S for all parts not illustrated or described here.

Ref. No.	Part No.	Description	Amt. Req.
1	39594 P	Oil Collector Plate -----	1
2	39563 T	Top Cover Needle Thread Eyelet -----	1
3	39552 J	Needle Driving Arm, marked "F" -----	1
4	22596 E	Screw - Needle Driving Arm -----	1
5	22569 D	Screw - Needle Thread Eyelet -----	1
6	39563 U	Needle Thread Eyelet -----	1
7	39568 S	Lower Looper Thread Eyelet -----	1
8	43139 A	Nut - Looper Thread Eyelet Screw -----	2
9	22569 B	Screw - Eyelet Mounting Bracket -----	1
10	39568 D	Looper Thread Eyelet Mounting Bracket -----	1
11	39568 T	Upper Looper Thread Eyelet -----	1
12	39568 U	Auxiliary Looper Thread Eyelet -----	1
13	376 A	Screw - Looper Thread Eyelet -----	2
14	39556 E	Presser Arm -----	1
15	39520 BF	Presser Foot -----	1
16	22768 B	Screw - Tongue and Hinge Spring -----	1
17	39530	Presser Foot Hinge Spring -----	1
18	39597 P	Presser Foot Stitch Tongue, marked "EA" -----	1
19	22798 B	Screw - Tape Guide -----	1
20	39530 BF	Tape Guide -----	1
21	39534 C	Main Feed Bar -----	1
22	39540 B-4	Differential Feed Driving Eccentric -----	1
23	39536 AE	Differential Feed Bar Driving Connection -----	1
24	39505 BF	Main Feed Dog, marked "BY" -----	1
25	93 A	Screw - Main Feed Dog -----	1
26	22528	Screw - Differential Feed Dog -----	1
27	39526 BF	Differential Feed Dog, marked "BZ" -----	1
28	39501 AC	Cloth Plate -----	1
29	39532 E	Cloth Plate Latch Spring -----	1
30	90	Screw - Latch Spring -----	2
31	53634 C	Washer - Side Cover -----	1
32	39582 GG	Side Cover -----	1
33	39582 J	Rivet -----	2
34	39582 H	Spring -----	1
35	39524 BF	Throat Plate, marked "BK" -----	1
36	22585 G	Screw - Side Cover Latch -----	1
37	39580 AD	Throat Plate and Lower Knife Support -----	1
38	88 B	Locking Screw - Lower Knife Holder -----	1
39	39550 BF	Lower Knife Holder -----	1
40	39549 J	Lower Knife -----	1
41	22569	Screw - Tape Guide -----	2
42	69 H	Washer - Tape Guide -----	2
43	39599	Tape Guide -----	1
44	39571 A	Upper Knife Clamp Nut -----	1
45	39572 B	Upper Knife Holder Block -----	1
46	22829	Screw - Upper Knife Holder Block -----	1
47	22650 CB-4	Set Screw - Upper Knife -----	1
48	39270 E	Upper Knife -----	1
49	39571 E	Upper Knife Clamp -----	1
50	39508 E	Upper Looper, marked "CK" -----	1
51	39508 D	Lower Looper -----	1
52	39540 B-10	Main Feed Driving Eccentric -----	1



*Union Special*<sup>®</sup>  
INDUSTRIAL SEWING MACHINES

UNION SPECIAL maintains sales and service facilities throughout the world. These offices will aid you in the selection of the right sewing equipment for your particular operation. Union Special representatives and service men are factory trained and are able to serve your needs promptly and efficiently. Whatever your location, there is a Union Special Representative to serve you. Check with him today.

ATLANTA, GA.

MONTREAL, QUEBEC

BOSTON, MASS.

BRUSSELS, BELGIUM

CHICAGO, ILL.

LEICESTER, ENGLAND

DALLAS, TEXAS

LONDON, ENGLAND

LOS ANGELES, CAL.

PARIS, FRANCE

NEW YORK, N. Y.

PHILADELPHIA, PA.

STUTT GART, GERMANY

Representatives and distributors in all important  
industrial cities throughout the world.

*Union Special*  
MACHINE COMPANY

400 N. FRANKLIN ST., CHICAGO, ILL. 60610